

# lourdes



## SIZE

To fit bust

71-76	81-86	91-97	102-107	112-117	122-127	132-137	142-147	152-157	cm
28-30	32-34	36-38	40-42	44-46	48-50	52-54	56-58	60-62	in

Actual bust measurement of garment

98	108	118	128	138	148	158	168	178	cm
39	43	47	50½	54½	58½	62	66	70	in

## YARN

Big Wool

11	11	12	12	13	13	14	14	15	x 100gm
----	----	----	----	----	----	----	----	----	---------

(photographed in Concrete 61)

## NEEDLES

1 pair 7mm (no 10/11) (US 10½) needles

## TENSION

12 sts and 20 rows to 10cm/4in measured over moss stitch using 7mm (US 10½) needles

## EXTRAS

Stitch markers

# demi



## SIZE

To fit bust

71-76	81-86	91-97	102-107	112-117	122-127	132-137	142-147	152-157	cm
28-30	32-34	36-38	40-42	44-46	48-50	52-54	56-58	60-62	in

Actual bust measurement of garment

111	120	131	142	151	162	173	184	195	cm
44	47	51½	56	59½	64	68	72½	77	in

## YARN

Soft Boucle

A Bear 604

12	12	13	13	14	14	15	15	16	x 50gm
----	----	----	----	----	----	----	----	----	--------

Alpaca Soft DK

B Toffee 203

3	3	4	4	4	5	5	5	6	x 50gm
---	---	---	---	---	---	---	---	---	--------

## NEEDLES

1 pair 5½mm (no 5) (US 9) needles

1 pair 8mm (no 0) (US 11) needles

## TENSION

9 sts and 12 rows to 10cm/4in measured over rev st st using triple strand of **Soft Boucle** and 8mm (US 11) needles.

21 sts and 22 rows to 10cm/4in measured over K1, P1 rib using double strand of **Alpaca Soft DK** and 5½mm (US 9) needles.

## EXTRAS

Stitch markers

Separating zipper 45 [45: 45: 50: 50: 50: 55: 55: 55] cm long

esme



#### SIZE

To fit bust

71-76	81-86	91-97	102-107	112-117	122-127	132-137	142-147	152-157	cm
28-30	32-34	36-38	40-42	44-46	48-50	52-54	56-58	60-62	in

Actual bust measurement of garment

105	117	126	135	145	154	166	175	185	cm
41½	46	50	53	57	60½	65½	69	73	in

#### YARN

Brushed Fleece

10	10	10	11	11	12	12	13	13	x 50gm
----	----	----	----	----	----	----	----	----	--------

(photographed in Tarn 254)

#### NEEDLES

1 x 6mm (no 4) (US 10) circular needle, 80cm/32in long

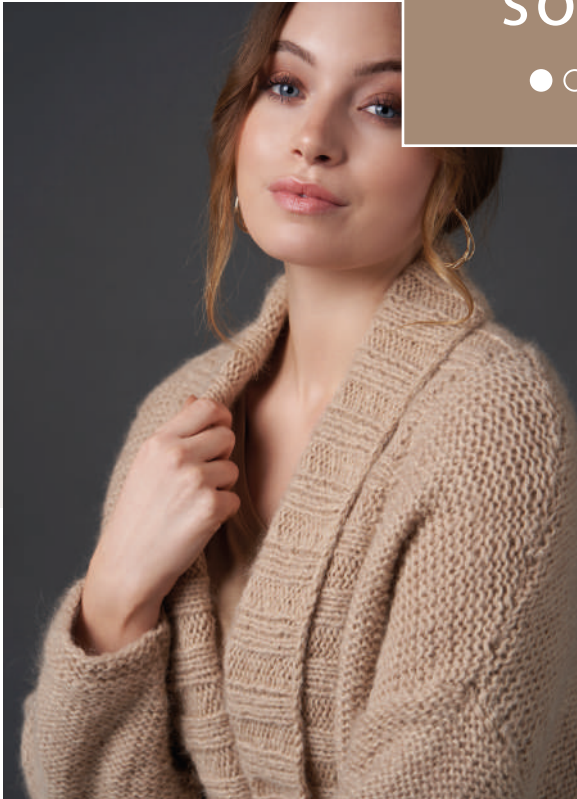
#### TENSION

13 sts and 19 rows to 10cm/4in measured over st st using 6mm (US 10) needles.

14 sts and 19 rows to 10cm/4in measured over K1, P1 rib using 6mm (US 10) needles.



# soleil



## SIZE

To fit bust

71-76	81-86	91-97	102-107	112-117	122-127	132-137	142-147	152-157	cm
28-30	32-34	36-38	40-42	44-46	48-50	52-54	56-58	60-62	in

Actual bust measurement of garment

108	117	128	137	148	157	169	179	187	cm
43	46	50½	54	58½	62	66	70	74	in

## YARN

Kid Classic

A Champagne 898

7	7	8	8	9	9	10	10	11	x 50gm
---	---	---	---	---	---	----	----	----	--------

Alpaca Classic

B Champagne 127

7	7	8	8	9	9	10	10	11	x 25gm
---	---	---	---	---	---	----	----	----	--------

## NEEDLES

1 pair 5½mm (no 5) (US 9) needles

1 x 5½mm (no 5) (US 9) circular needle, 80cm/32in long

## TENSION

14 sts and 16 rows to 10cm/4in measured over rev st st using 5½mm (US 9) needles, holding 1 strand of each together.

## EXTRAS

Stitch holders

Stitch markers

# leiana



## SIZE

To fit bust

71-76	81-86	91-97	102-107	112-117	122-127	132-137	142-147	152-157	cm
28-30	32-34	36-38	40-42	44-46	48-50	52-54	56-58	60-62	in

Actual bust measurement of garment

90	99	111	120	133	141	154	162	175	cm
36	39	45	47½	52	55½	60½	64	69	in

## YARN

Kid Classic

10	11	11	12	12	13	13	14	14	x 50gm
----	----	----	----	----	----	----	----	----	--------

(photographed in Clover 895)

## NEEDLES

2 x 5mm (no 6) (US 8) circular needles, 80cm/32in long

## TENSION

19 sts and 25 rows to 10cm/4in measured over K2, P2 rib (blocked) using 5mm (US 8) needles.

20 sts and 38 rows to 10cm/4in measured over garter stitch using 5mm (US 8) needles.

19 sts and 25 rows to 10cm/4in measured over st st using 5mm (US 8) needles.

## EXTRAS

Stitch holders

Stitch markers

## NOTE

When working the shawl collar, two circular needles are used. Wrap and turn is *not used* when working short rows in garter stitch.

# lana



## SIZE

To fit bust

71-97	102-127	132-147	cm
28-38	40-50	52-62	in

Actual width at lower edge of back (or front)

82	95	110	cm
32½	37½	43½	in

## YARN

Felted Tweed

A Camel 157

7	8	9	x 50gm
---	---	---	--------

Kidsilk Haze

B Lustre 686

6	7	8	x 25gm
---	---	---	--------

## NEEDLES

1 pair 4½mm (no 7) (US 7) needles

1 pair 5mm (no 6) (US 8) needles

1 x 5mm (no 6) (US 7) circular needle, 40cm/16in long

## TENSION

19 sts and 30 rows to 10cm/4in measured over st st using 5mm (US 8) needles and one strand each of A and B held together.

## EXTRAS

Stitch marker



# amore



## SIZE

To fit bust

71-76	81-86	91-97	102-107	112-117	122-127	132-137	142-147	152-157	cm
28-30	32-34	36-38	40-42	44-46	48-50	52-54	56-58	60-62	in

Actual bust measurement of garment

102	112	122	132	142	152	162	172	182	cm
40	44	48	52	56	60	64	67¾	71¾	in

## YARN

Big Wool

13	13	14	14	15	15	16	16	17	x 100gm
----	----	----	----	----	----	----	----	----	---------

(photographed in Cactus 83)

## NEEDLES

1 x 7mm (no 2) (US 10½) circular needle, 80cm/32in long

2 x 9mm (no 00) (US 13) circular needles, 80cm/32in long

## TENSION

12 sts and 16 rows to 10cm measured over K1, P1 rib using 7mm (US 10½) needle.

8 sts and 20 rows to 10cm measured over brioche rib using 9mm (US 13) needle.

## EXTRAS

Stitch holders

Stitch markers

cici



#### SIZE

To fit bust

71-76	81-86	91-97	102-107	112-117	122-127	132-137	142-147	152-157	cm
28-30	32-34	36-38	40-42	44-46	48-50	52-54	56-58	60-62	in

Actual bust measurement of garment

90	102	110	121	130	142	150	162	172	cm
35½	40	43	48	51	56	59	64	67	in

#### YARN

Soft Boucle

7	7	8	8	9	9	10	10	11	x 50gm
---	---	---	---	---	---	----	----	----	--------

(photographed in Natural 602)

#### NEEDLES

1 pair 6mm (no 4) (US 10) needles

1 x 6mm (no 4) (US 10) circular needle, 60cm/24in long

#### TENSION

14 sts and 24 rows to 10cm/4in measured over textured patt using 6mm (US 10) needles.

#### EXTRAS

Stitch holders



# margo



## SIZE

To fit bust

71-76	81-86	91-97	102-107	112-117	122-127	132-137	142-147	152-157	cm
28-30	32-34	36-38	40-42	44-46	48-50	52-54	56-58	60-62	in

Actual bust measurement of garment

78	87	98	109	118	129	138	149	158	cm
30¾	34¼	38½	43	46½	50¾	54¼	58¾	62¼	in

## YARN

Alpaca Soft DK

12	13	13	14	14	15	15	16	16	x 50gm
----	----	----	----	----	----	----	----	----	--------

(photographed in Classic Brown 204)

## NEEDLES

1 pair 3¼mm (no 10) (US 3) needles

1 pair 4mm (no 8) (US 6) needles

1 x 4mm (no 8) (US 6) circular needle, 80cm/32in long

## TENSION

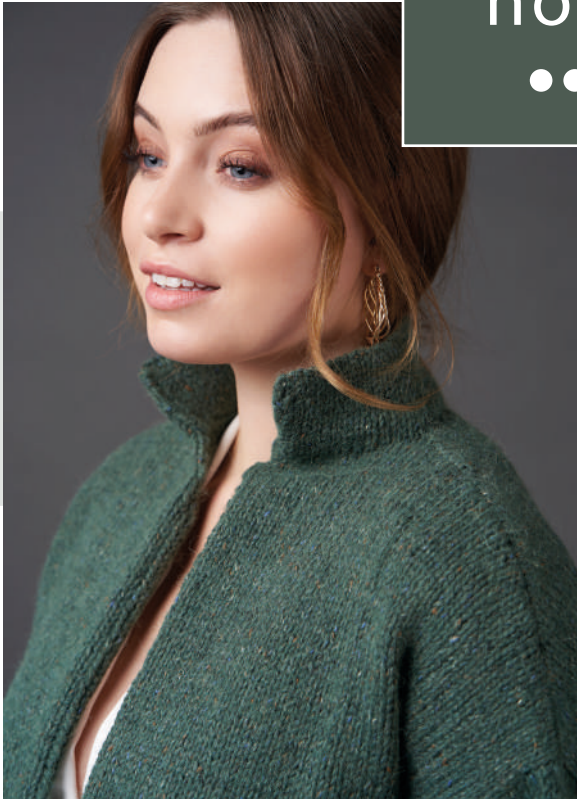
22 stitches and 30 rows to 10cm/4in measured over st st using 4mm (US 6) needles.

## EXTRAS

Stitch holders

Stitch markers

# noelle



## SIZE

To fit bust

71-76	81-86	91-97	102-107	112-117	122-127	132-137	142-147	152-157	cm
28-30	32-34	36-38	40-42	44-46	48-50	52-54	56-58	60-62	in

Actual bust measurement of garment

90	101	109	120	131	141	149	160	170	cm
36	40	43	47	51½	55½	59	63	67	in

## YARN

Felted Tweed Aran

14	14	15	15	16	16	17	17	18	x 50gm
----	----	----	----	----	----	----	----	----	--------

(photographed in Pine 782)

## NEEDLES

1 pair 4½mm (US 7) needles

1 x 4½mm (US 7) circular needle, 80cm/32in long

## TENSION

19 sts and 25 rows to 10cm/4in measured over st st using 4½mm (US 7) needles.

## EXTRAS

Stitch holders

Stitch markers